



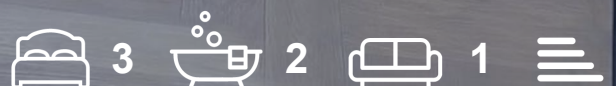
CHATTERTON | REES



564a Kings Road

, London, SW6 2DY

Guide price £1,250,000



# 564a Kings Road



## Description

A stunning recently re modelled three double bedroom split level Maisonette on The Kings Road in London. This property has circa 1400sqft of internal space split over three floors with a private entrance on the side road allowing easy parking and access.

The first floor holds a large living and dining area with herringbone wood flooring, high ceilings and access on to a front balcony and rear flat roof accessed via double French doors allowing plenty of natural light and fresh air. The kitchen is off the mid landing with plenty of storage space and almost new appliances built in with beautiful worktops and backsplash.

The second floor holds two large double bedrooms with the rear bedroom benefitting from a small balcony and double doors, these bedrooms share a large bathroom suite with large walk in shower and separate bath.

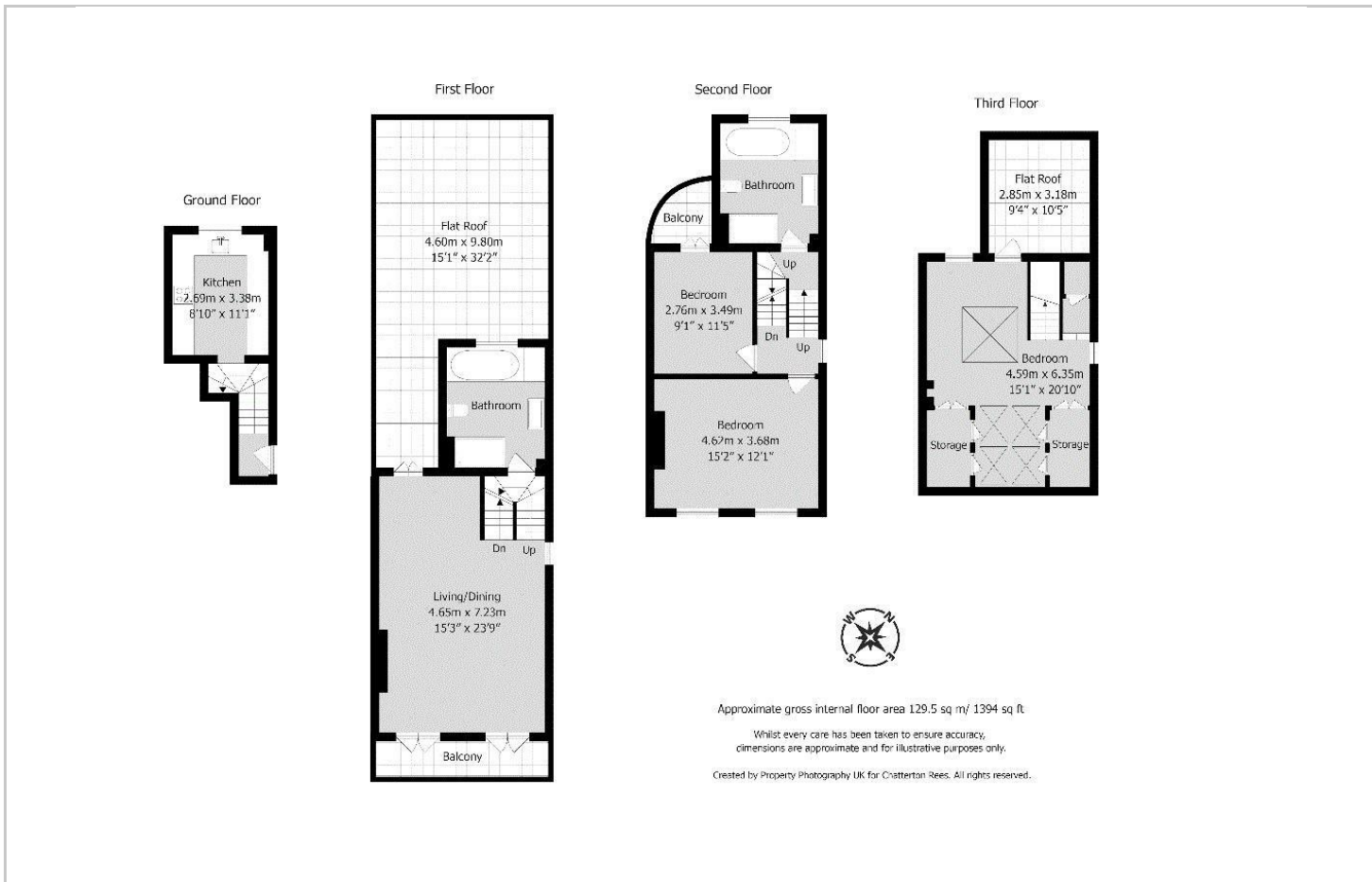
The master suite is beautifully presented with glass balustrades ample storage and plenty of natural light

- Three Double Bedrooms
- Recently refurbished
- Private Entrance on Side Street
- 1394 sqft
- High Ceilings
- Access to outside areas

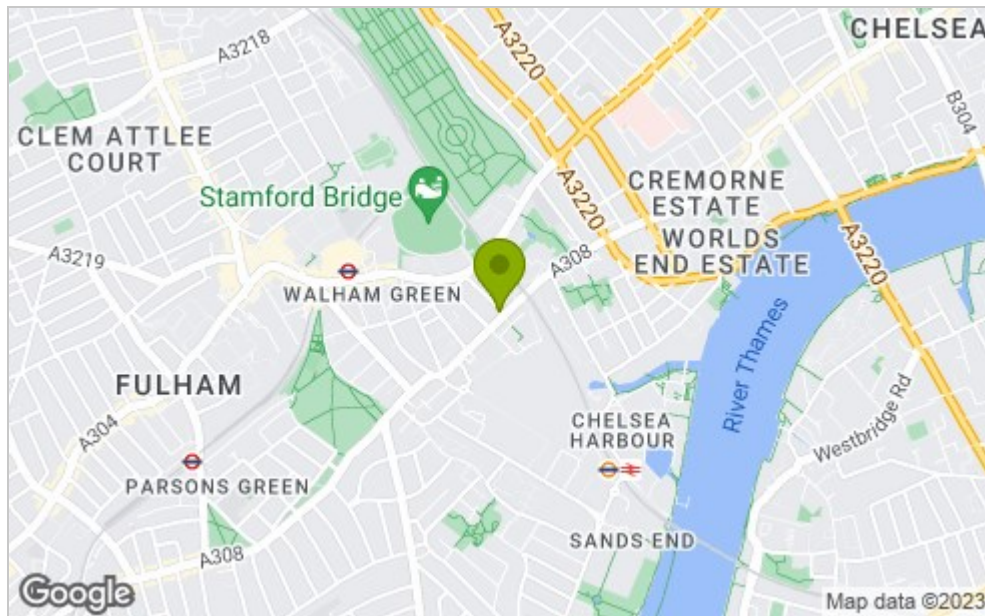




## Floor Plan



## Area Map



## Viewing

Please contact our Chatterton Rees Office on 020 3780 0580 if you wish to arrange a viewing appointment for this property or require further information.

These particulars, whilst believed to be accurate are set out as a general outline only for guidance and do not constitute any part of an offer or contract. Intending purchasers should not rely on them as statements of representation of fact, but must satisfy themselves by inspection or otherwise as to their accuracy. No person in this firm's employment has the authority to make or give any representation or warranty in respect of the property.

## Energy Efficiency Graph

